



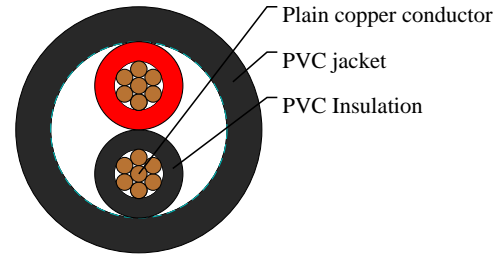
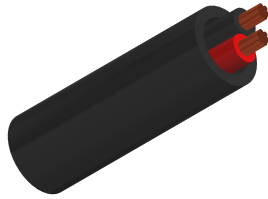
Caledonian

IEC 60502 Cables

www.caledonian-cables.com

marketing@caledonian-cables.com

600/1000V,PVC Insulated Cables according to IEC 60502-1 2C4



APPLICATIONS

These cables are used for electricity supply in low voltage installation system, They are suitable for installation in indoors and outdoors, in cable ducts, under ground, in power and switching stations, local energy distributions, industrial plants, where there is no risk of mechanical damage.

VOLTAGE RATING

600/1000V

CABLE CONSTRUCTION

Conductors:The conductors shall be either of Class 1 or Class 2 of plain or metal-coated annealed copper or of plain aluminium or aluminium alloy, or of Class 5 of plain or metal-coated copper in accordance with IEC 60228.

Insulation:PVC Insulation material and thickness shall be as per IEC 60502-1, PVC material shall be Type A as per IEC 60502-1.

Outer Sheath:Outer sheath shall be of extruded PVC Type ST1/ST2 as per IEC 60502-1, Polyethylene type ST3/ST7, Halogen free compound ST8, Polychloroprene, chlorosulfonated polyethylene or similar polymers, type SE1 are also available on request.

Fire Performance of Cable Sheaths:Cables can be supplied with special flame retardant PVC outer sheath to comply with the flame test requirements of IEC 60332-3-22, IEC 60332-3-23 and IEC 60332-3-24, Halogen Free material comply to IEC 60754-1/2 and IEC 60684-2.

COLOUR CODE

Colour Code (1) :Red,Black

Colour Code (2) :Brown,Blue

DIMENSION AND PARAMETERS

No. of Cores × Cross-sectional Area	Conductor Diameter	Nominal Insulation Thickness	Nominal Sheath Thickness	Nom. Overall Diameter
No. × mm ²	mm	mm	mm	mm
2×4	2.3	1	1.8	12.2